

# Bulletins Live! Two (BLT) Tutorial

Bulletins Live! Two (BLT) is the Web-based application to access Endangered Species Protection Bulletins (Bulletins). These Bulletins contain enforceable pesticide use limitations that are necessary to ensure a pesticide's use will not harm a species listed as threatened or endangered (listed) under the Endangered Species Act or their designated critical habitat.

This application runs most successfully using the following Internet browsers:

- Google Chrome
- Mozilla Firefox
- Safari
- Microsoft Edge

Please ensure that you are accessing BLT using one of the indicated browsers.

This tutorial explains the steps to use the BLT application, including a section with additional information.

The tutorial includes the following eight sections:

1. [Using the map application tools](#)
2. [Navigating to the intended pesticide application location](#) (Step 1 on **Instructions Tab**)
3. [How to see the full extent of a pesticide use limitation area](#) (this is an optional map feature)
4. [Selecting the application month](#) (Step 2 on **Instructions Tab**)
5. [Selecting the EPA Registration Number\(s\)](#) (Step 3 on **Instructions Tab**)
6. [Selecting a Pesticide Use Limitation Area \(PULA\)](#) (Step 4 on **Instructions Tab**)
7. [Printing a Bulletin](#) (Step 5 on **Instructions Tab**)
8. [Understanding the components of the PDF Bulletin](#)
9. [Additional information](#)

# 1. Using the map application tools

Match the following letters for the tools with the letters on the image.

**A. Zoom Tools:** Zoom in using the “+” button. Zoom out using the “-” button.

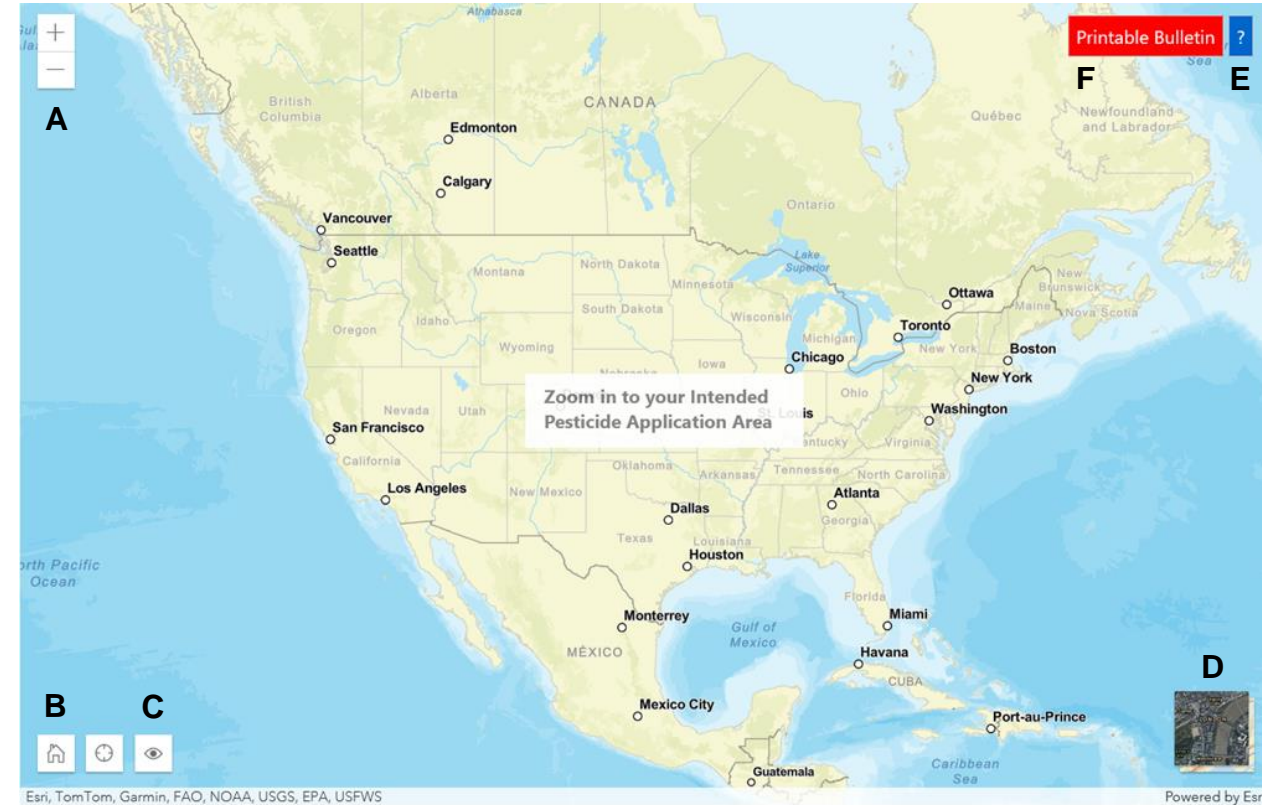
**B. Default Map View Tool:** Click the house in the lower left-hand corner to zoom to the full extent of the Pesticide Use Limitation Areas (PULAs) on the map. The geographic areas on the map where pesticide use limitations are present are referred to as PULAs. A PULA is indicated on the map by a pink shape. These are the geographic areas where pesticide use limitations exist to protect listed species and their designated critical habitat.

**C. Opacity Slider:** Use the opacity slider to increase or decrease the shading intensity of the PULA(s).

**D. Basemap Tool:** Click the box in the lower right-hand corner to change the background. It will say “Toggle Basemap” when your cursor hovers over it.

**E. Printable Bulletin:** This button in the upper right-hand corner will generate a pdf of the PULA, after the PULA has been clicked on.

**F. Help Button:** This blue button marked with a “?” displays directions for using the application.



## 2. Navigating to the intended pesticide application location (Step 1 on *Instructions Tab*)

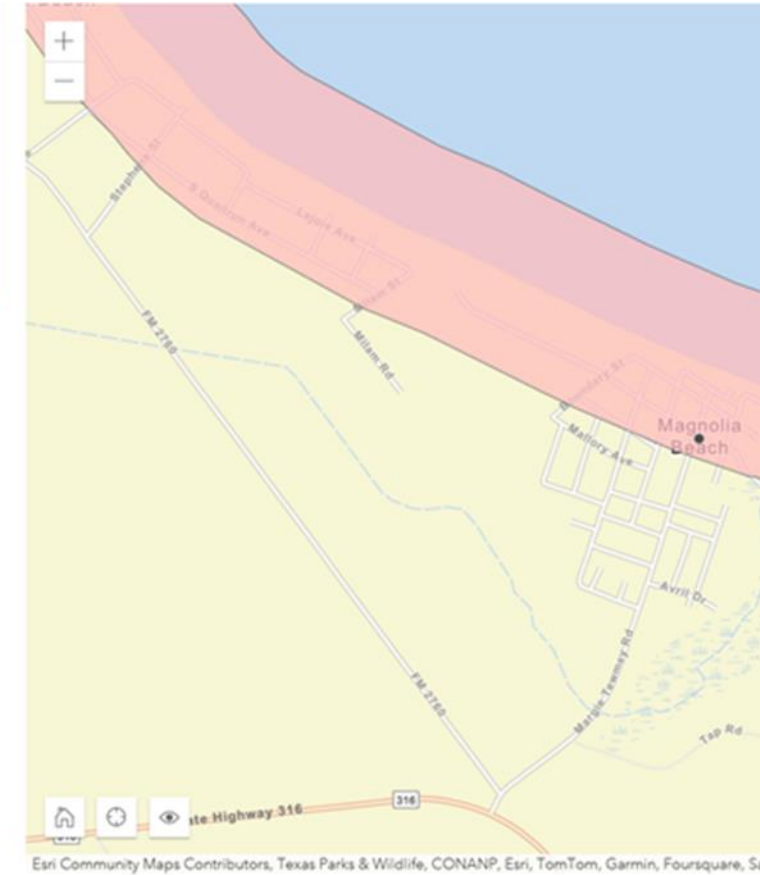
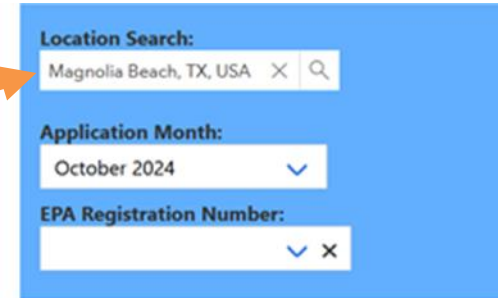
There are three ways to zoom to your intended pesticide application area:

A. Use the “Location Search” tool at the top of the blue search window left of the map. Search options include but are not limited to:

- city (e.g., New York, NY)
- county (e.g., New York County, NY)
- landmark (e.g., Statue of Liberty, NY)
- zip code (e.g., 10004)
- full address (e.g., Statue of Liberty National Monument, Liberty Island, New York, NY 10004) or
- coordinates (latitude and longitude; it does not matter which coordinate is entered first as long as they are separated by a comma and a space) in WGS84 decimal degrees (e.g., -74.0444, 40.6892).

Names of cities, counties or other landmarks may occur in more than one location across the country; therefore, adding unique identifiers such as the state will help BLT find the correct location.

A

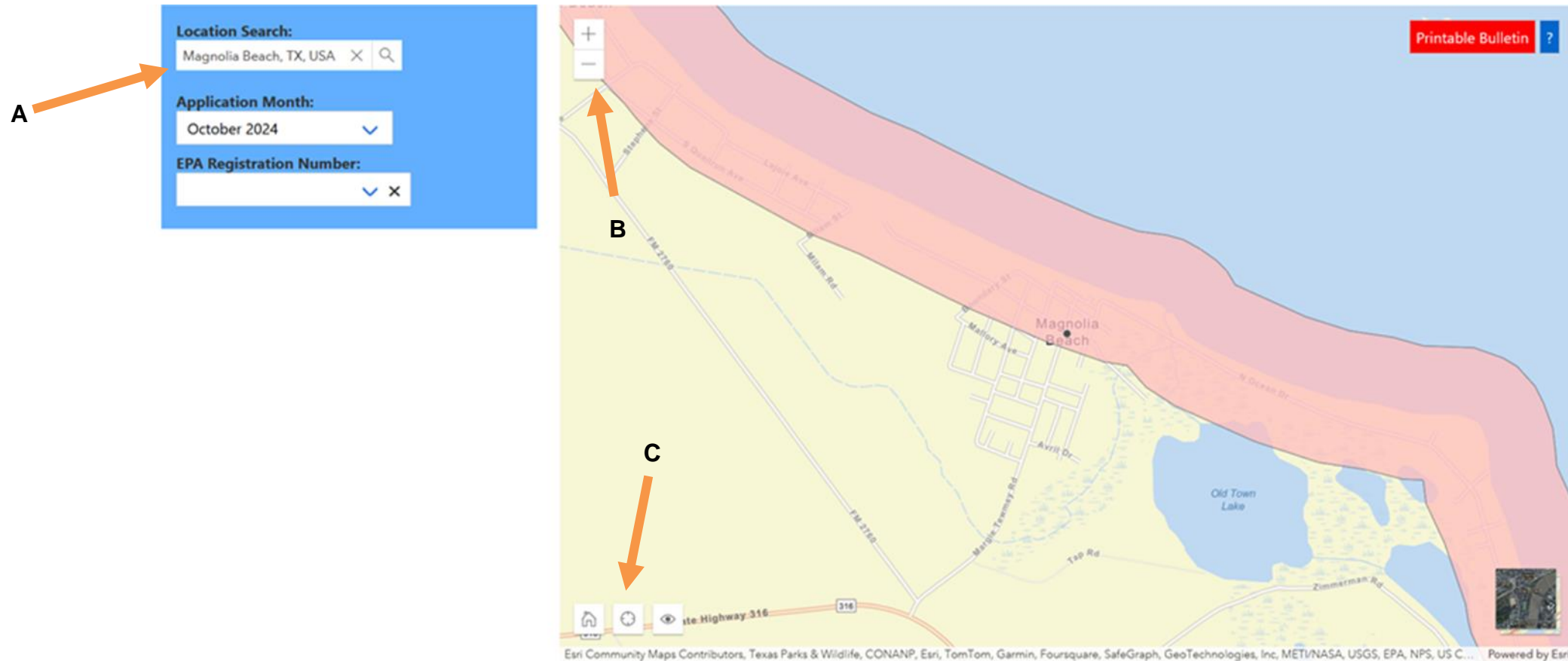


## 2. Navigating to the intended pesticide application location (Step 1 on *Instructions Tab*)

There are three ways to zoom to your intended pesticide application area:

B. Manually zoom to a location by dragging the map to your location and using the “+” and “-” buttons in the upper left-hand corner to zoom in and out.

C. Use the lower left hand “Find my location” button if you are within the pesticide application area and your device’s privacy settings allow your location to be broadcasted.



# 3. How to see the full extent of a pesticide use limitation area (this is an optional map feature)

There are two ways to zoom to the full extent of a pesticide use limitation area (PULA), if you're curious about what additional area is covered by the PULA beyond your intended pesticide application area. Note that zooming to the full extent of a pesticide use limitation area is optional.

- A. To see the full extent of all pesticide use limitation areas associated with specific product(s), follow the steps in section 5 of this written tutorial to filter your search by EPA registration number(s). Once at least one EPA registration number has been entered in the search, a "Zoom to" drop-down menu will appear to the right of the "+" and "-" zoom buttons in the upper left corner of the map. Select the option "Zoom to Filtered," which will adjust the map view to show you the full extent of pesticide use limitation area(s) for the filtered product(s). Note that this will zoom you away from your intended pesticide application area. You do not need to "Zoom to Filtered" to obtain a bulletin, you only need to zoom to your intended pesticide application area. The "Zoom to Filtered" option exists for anyone interested in viewing the complete boundaries of certain PULAs.
- B. To see the full extent of a pesticide use limitation area that you have clicked on, the "Zoom to" drop-down menu will show the option "Zoom to Selected." Note that this will zoom you away from your intended pesticide application area, and you do not need to complete this step to obtain a bulletin.

The screenshot displays a web application interface for pesticide use limitation areas. On the left, a search panel includes a location search for "Magnolia Beach, TX, USA", an application month filter for "October 2024", and an EPA registration number filter for "AKOFOS 48 EC (85724-10)". Below the search panel, it indicates "3 Pula(s) Filtered". The main map area shows a pink-shaded PULA overlay over a map of Magnolia Beach, Texas, with roads like Highway 316 and Old Town Lake visible. A "Zoom to" dropdown menu is open, showing options: "Zoom to", "Zoom to Filtered", and "Zoom to Selected". A "Printable Bulletin" button is in the top right. A details panel titled "Limitations for Selected Area" is open, showing "Pula ID: 94", "Event Name: NMFS BiOps 2024", and "Application Month: October 2024". It contains a table with one entry: AKOFOS 48 EC (85724-10) with a count of 1. Below the table are "Full Details" and "Clear Selected" buttons. A second "Zoom to" dropdown menu is also visible on the map, with "Zoom to Selected" selected.

Product	Count
AKOFOS 48 EC (85724-10)	1

# 4. Selecting the application month (Step 2 on *Instructions Tab*)

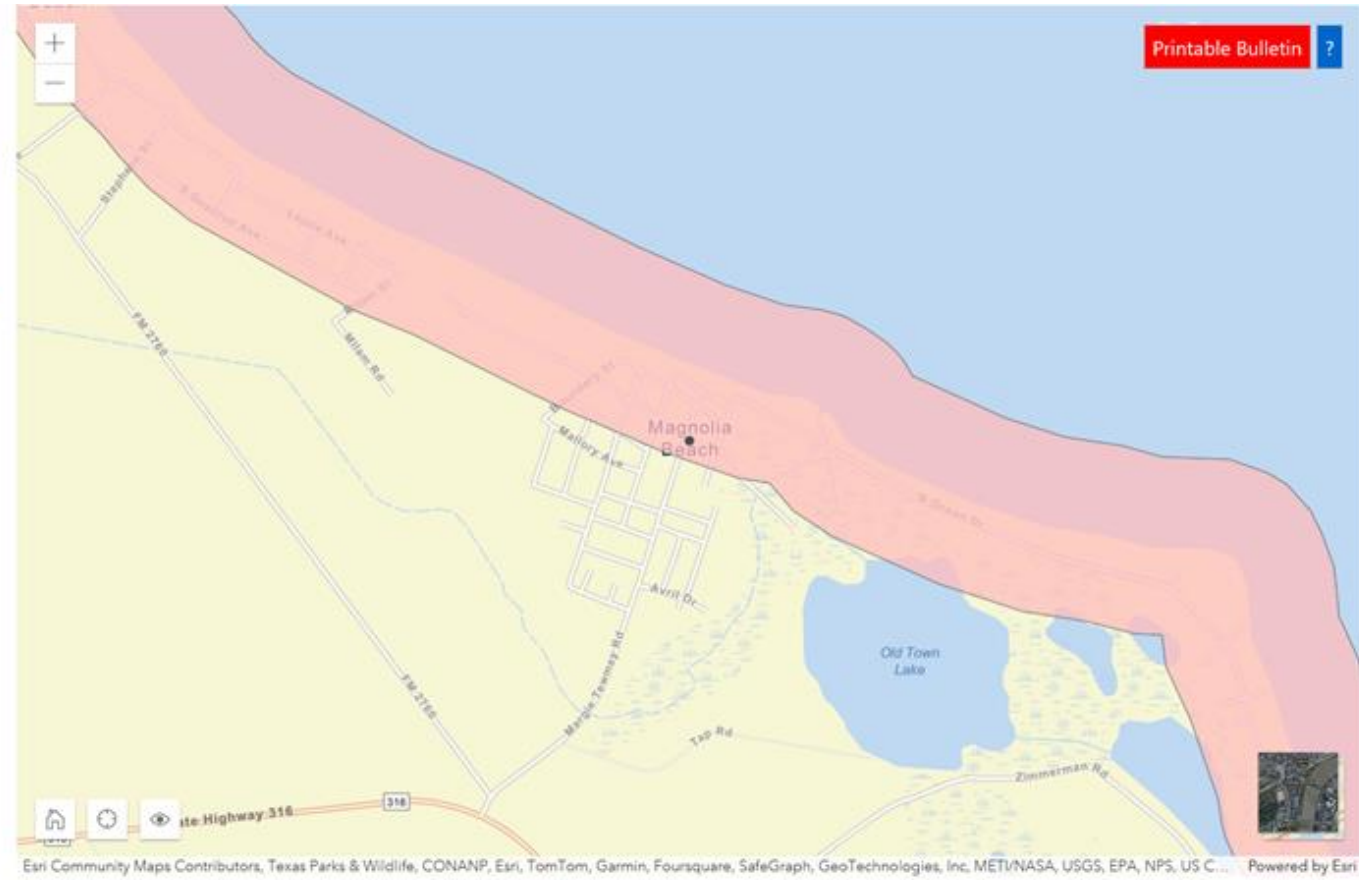
After zooming to your intended application area, you must select the month when you intend to make your pesticide application. Bulletins are available for the current month (default option) as well as the next six months. Select a month from the second box in the blue search window left of the map. The “Application Month” box is located below the “Location Search” box. An application month of October 2024 is used in the featured example.



**Location Search:**  
Magnolia Beach, TX, USA

**Application Month:**  
October 2024

**EPA Registration Number:**



# 5. Selecting the EPA Registration Number(s) (Step 3 on *Instructions Tab*)

**EPA registration number searches:** See next page for instructions about how to locate the EPA registration number on a pesticide label. A search box for entering the EPA registration number is located below the “Application Month” box. While typing, product name(s) will appear in a dropdown menu directly beneath the EPA registration number search box. The EPA registration number **MUST** be typed first to ensure the correct product is searched. It is not possible to search solely using the product name(s); The purpose of the “product” box that shows the product name is for a user to verify that the search using the EPA registration number was executed properly. If this does not appear, then the search was not successful. After typing the EPA registration number(s), only the PULAs for the searched product(s) will appear on the map. PULAs for a searched product can be removed from the map view by clicking the “x” on the right side of the product box. To display PULAs for multiple different products on the map, simply do not click the “x” on the right side of the product box and repeat the step of entering the number of each product of interest.

The screenshot shows a search interface with the following elements:

- Location Search:** A text input field containing "Seneca, WI, USA" with a clear (X) and search (magnifying glass) icon.
- Application Month:** A dropdown menu showing "October 2024" with a downward arrow.
- EPA Registration Number:** A dropdown menu that is currently empty, with a downward arrow and a clear (X) icon.
- Product List:** A table with two rows of product information, each with a clear (X) icon on the right.

Product	
FEXAPAN PLUS VAPORGRIP TECHNOLOGY (352-938)	X
INTREPID 80WSP AGRICULTURAL INSECTICIDE (62719-438)	X

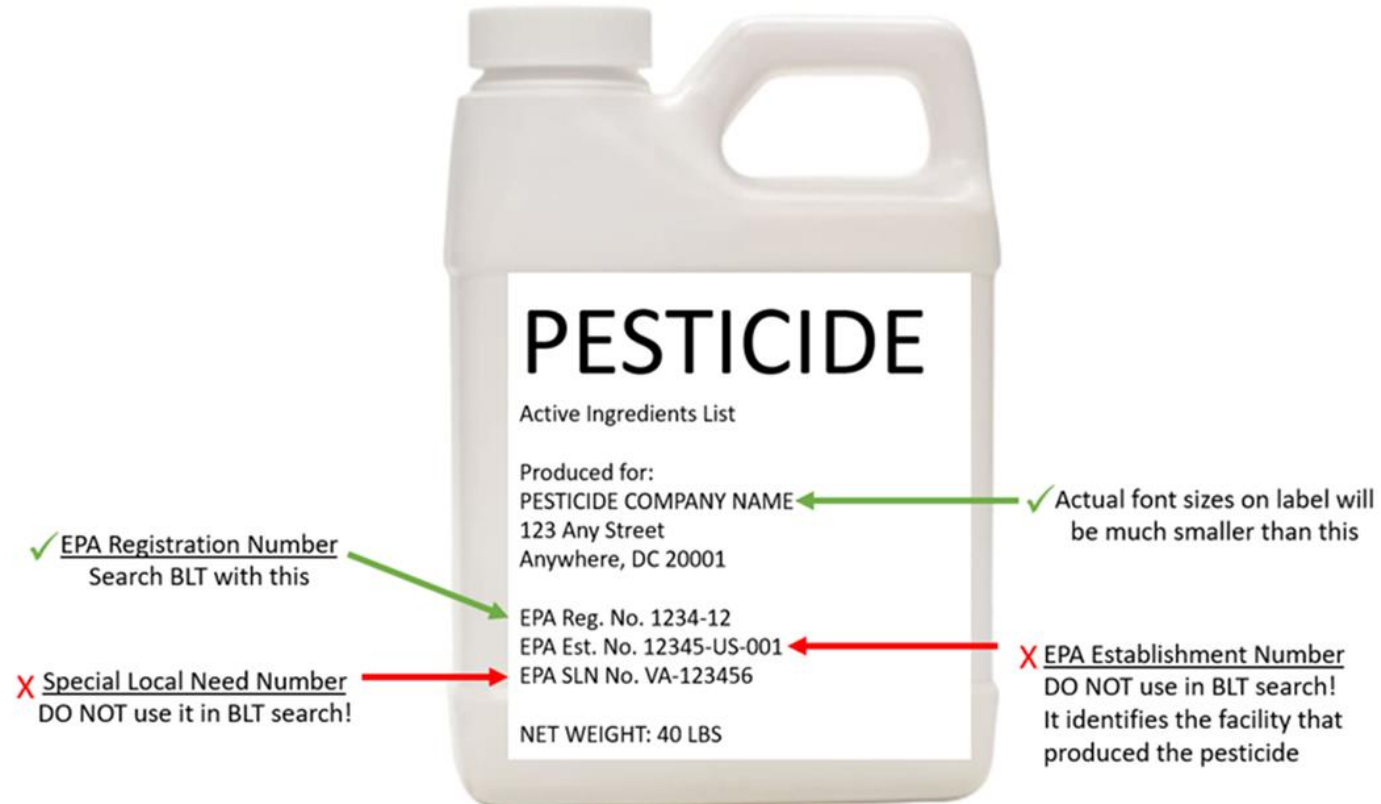
5 Pula(s) Filtered



# 5. Selecting the EPA Registration Number(s) (Step 3 on *Instructions Tab*)

## Locating the EPA registration number on a product label:

- Look for “EPA Reg. No.” followed by two or three sets of numbers.
- If your product's registration number has **two** parts (ex. 1234-12), it has a **primary registration number**. This is the number that should be entered into the product search in BLT.
- If your product's registration number has **three** parts (ex. 1234-12-123), you have a **supplemental distributor product**. These products have the same chemical composition and efficacy as primary products, but often have different brand or product names. Enter the **first two parts** of this registration number (ex. **1234-12-123**) into the EPA registration search in Bulletins Live! Two.



# 5. Selecting the EPA Registration Number(s) (Step 3 on *Instructions Tab*)

- The EPA Establishment Number (EPA Est. No.) should be printed near the EPA Reg. No. It identifies the facility that produced the pesticide and is not used in BLT. Searching will yield no results.
- If your label has “EPA SLN No.” followed by the two-letter state designation, then a 6-digit number (ex. EPA SLN No. NC950034). This is a Special Local Need registration number (SLN number) also known as a FIFRA Section 24(c) Registration Number. These Registrations are issued by the states to meet special local needs.
- These SLN numbers will not work within the Bulletins Live! Two EPA registration number search. A label that has an SLN should also have a primary registration number that can be entered in BLT. Please note that bulletins are not intended to replace or override any restrictions that your state may impose. You need to be aware of and follow pesticide use limitations in your area according to both the state AND federal requirements.

# 6. Selecting a PULA (Step 4 on Instructions Tab)

If a PULA occurs within your intended pesticide application area:

If a PULA occurs within your intended pesticide application area, select the PULA by clicking on it. This will outline the selected PULA in yellow and activate the **“Limitations for Selected Area”** results window.

Clicking on the blue button at the bottom of the results window that says **“Full Details”** will display a product summary table of codes, active ingredients, uses, methods, forms, and limitations for the selected PULA.

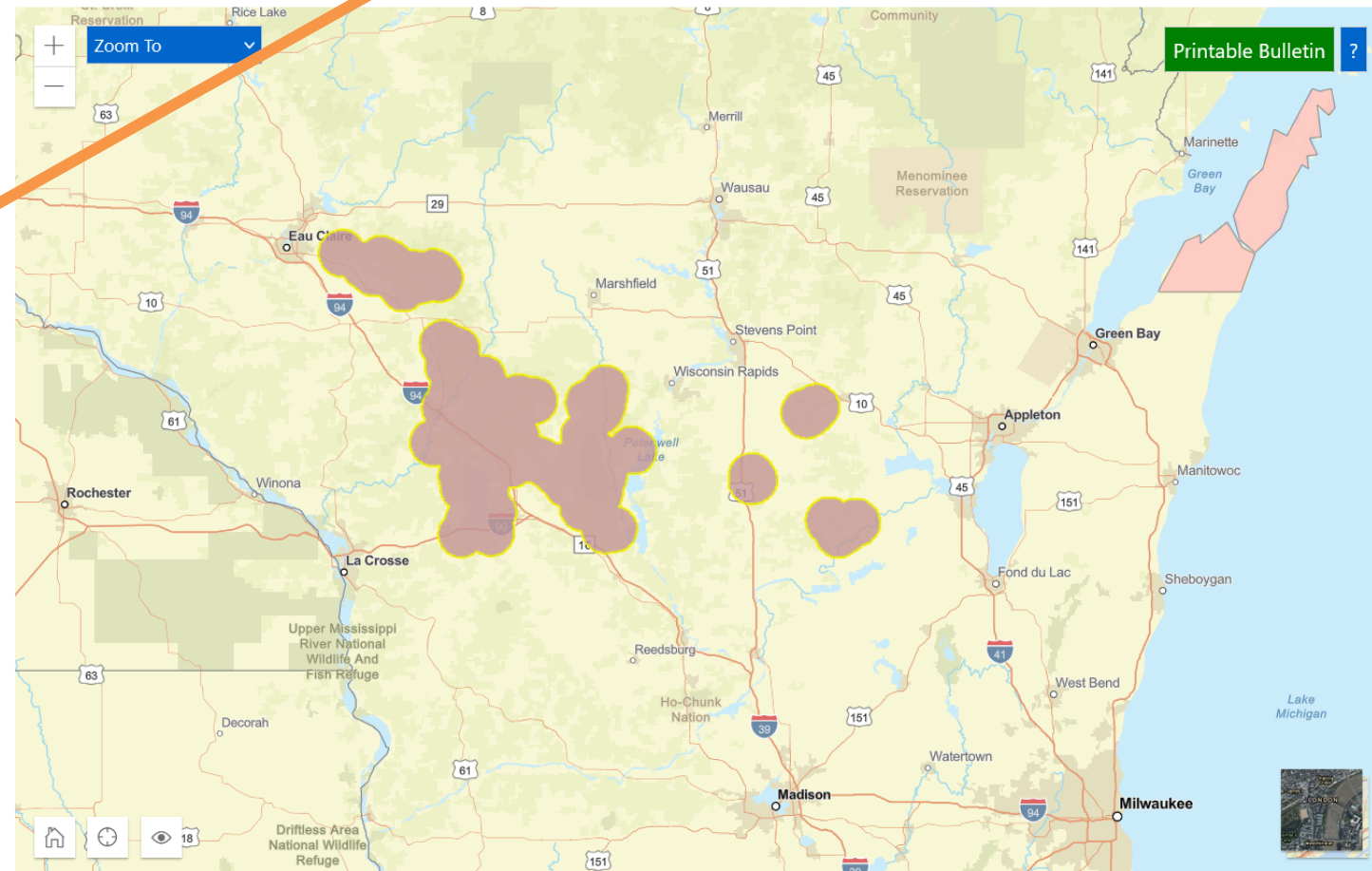
**Limitations for Selected Area**

Pula ID: 57  
Event Name: Methoxyfenozide  
Application Month: September 2024

Product	Count
INTREPID 80WSP AGRICULTURAL INSECTICIDE (62719-438)	2

Full Details

Clear Selected



# 7. Printing a Bulletin (Step 5 on *Instructions Tab*)

Print or save a pdf version of the Bulletin for your records, even if no PULAs appear in your intended pesticide application area.

If you see no PULA(s) in your intended application area after entering the location and EPA Reg. No., click on the map's green "Printable Bulletin" button. This creates a pdf that declares no limitations are present.

To print or save a PDF version of the bulletin when there is a PULA present, click the green "Printable Bulletin" button below the product summary table. The button can also be selected in the map when the table is not displayed.

**Limitations for Selected Area**

						soila-set sprinkler system producing a minimum median droplet size of 500 microns (median droplet size of 450-550 microns) or larger, and when the wind speed is between 2-10 mph.
1	INTREPID 80WSP AGRICULTURAL INSECTICIDE (62719-438)	Methoxyfenozid e	All Other Uses	Aerial spray	Any form	Do not apply this product in the specified areas.
1	INTREPID 80WSP AGRICULTURAL INSECTICIDE (62719-438)	Methoxyfenozid e	All Other Uses	Ground spray	Any form	Do not apply this product in the specified areas.

Printable Bulletin

Printable Bulletin ?


# 8. Understanding the components of the PDF Bulletin

[If a PULA occurs within your intended pesticide application area:](#)


The month for which the Bulletin is valid is located at the top of the page. Note: Bulletins are valid for the current month (default option) as well as the next six months.

If you intend to apply a pesticide within the PULA, outlined in yellow, follow the steps found in the Bulletin and the limitations in the [Pesticide Use Limitation Summary Table](#) and the [Codes and Limitations Table](#)

**Endangered Species Protection Bulletin**

 **Application Month:** February 2022  
**Product:** INTREPID 80WSP AGRICULTURAL INSECTICIDE (62719-438)

**1** Areas where pesticide use must be limited are identified on the map. A legend is located beside the map to help pinpoint these locations.



**2** Look below at the Pesticide Use Limitation Summary Table. This table lists the user selected Active Ingredient(s) (AIs) or Product(s) with pesticide use limitations on the printed map. Locate the Active Ingredient (AI) or Product you intend to apply in this table and identify the code in the last column. This code indicates the specific limitation associated with that AI or Product. A limitation description for each code can be found below in the Codes and Limitations Table. If multiple Pesticide Use Limitation Areas (PULAs) are visible on the map, these tables provide information for the highlighted PULA.

If you are applying a pesticide that contains more than one Active Ingredient, or multiple Products, then multiple codes may apply. Follow the limitations for all codes when using this pesticide.

# 8. Understanding the components of the PDF Bulletin

The [Pesticide Use Limitation Summary Table](#) identifies the Code(s) associated with the highlighted PULA. It also provides the:

**Product and AI:** These columns include the name of the active ingredient(s) and/or product(s) with pesticide use limitations.

-When using the default search settings, both the active ingredient(s) and product name(s) will be visible in the [Pesticide Use Limitation Summary Table](#), as seen in the example above.

Endangered Species Protection Bulletin


### Pesticide Use Limitation Summary Table

Product	AI	Use	Method	Form	Code
INTREPID 80WSP AGRICULTURAL INSECTICIDE (82719-438)	Methoxyfenozide	Cranberries	Aerial spray	Any form	1a
INTREPID 80WSP AGRICULTURAL INSECTICIDE (82719-438)	Methoxyfenozide	Cranberries	Ground spray	Any form	1a
INTREPID 80WSP AGRICULTURAL INSECTICIDE (82719-438)	Methoxyfenozide	All Other Uses	Ground spray	Any form	1
INTREPID 80WSP AGRICULTURAL INSECTICIDE (82719-438)	Methoxyfenozide	All Other Uses	Aerial spray	Any form	1

### Codes and Limitations Table

Code	Limitation
1	Do not apply this product in the specified areas.



UNITED STATES ENVIRONMENTAL PROTECTION AGENCY

# 8. Understanding the components of the PDF Bulletin

The [Pesticide Use Limitation Summary Table](#) identifies the Code(s) associated with the highlighted PULA. It also provides the:

**Use:** This column specifies the labeled use pattern or use(s) to which the limitation applies. The use may be specific (e.g., 'cranberries') or general, if referring to all use patterns registered for a particular product (e.g., 'Any Use').

**Method:** This column specifies the application method (e.g., aerial spray, ground spray, seed treatment, bait, broadcast, etc.) associated with the limitation.

**Form:** This column specifies the chemical formulation (e.g., bait, dust, ear tag, liquid, granular, etc.) associated with the limitation.

**Code:** This column specifies the code associated with the limitation. This code can be used to identify the active ingredient(s) and/or product(s) associated with limitation in the Pesticide Use and Limitation Summary Table.

**Limitation:** This column matches the code with a full description of the pesticide use limitation.

When applying a pesticide product with multiple active ingredients, follow all of the codes and corresponding limitations.

## Endangered Species Protection Bulletin

**Pesticide Use Limitation Summary Table**

Product	AI	Use	Method	Form	Code
INTREPID 80WSP AGRICULTURAL INSECTICIDE (62719-438)	Methoxyfenozide	Cranberries	Aerial spray	Any form	1a
INTREPID 80WSP AGRICULTURAL INSECTICIDE (62719-438)	Methoxyfenozide	Cranberries	Ground spray	Any form	1a
INTREPID 80WSP AGRICULTURAL INSECTICIDE (62719-438)	Methoxyfenozide	All Other Uses	Ground spray	Any form	1
INTREPID 80WSP AGRICULTURAL INSECTICIDE (62719-438)	Methoxyfenozide	All Other Uses	Aerial spray	Any form	1

**Codes and Limitations Table**

Code	Limitation
1	Do not apply this product in the specified areas.

# 8. Understanding the components of the PDF Bulletin

The [Pesticide Use Limitation Summary Table](#) identifies the Code(s) associated with the highlighted PULA. It also provides the:

**Code:** This column specifies the code associated with the limitation. This code can be used to identify the active ingredient(s) and/or product(s) associated with limitation in the Pesticide Use and Limitation Summary Table.


**Limitation:** This column matches the code with a full description of the pesticide use limitation.

When applying a pesticide product with multiple active ingredients, follow all of the codes and corresponding limitations.

Endangered Species Protection Bulletin					
Pesticide Use Limitation Summary Table					
Product	AI	Use	Method	Form	Code
INTREPID 80WSP AGRICULTURAL INSECTICIDE (62719-438)	Methoxyfenozide	Cranberries	Aerial spray	Any form	1a
INTREPID 80WSP AGRICULTURAL INSECTICIDE (62719-438)	Methoxyfenozide	Cranberries	Ground spray	Any form	1a
INTREPID 80WSP AGRICULTURAL INSECTICIDE (62719-438)	Methoxyfenozide	All Other Uses	Ground spray	Any form	1
INTREPID 80WSP AGRICULTURAL INSECTICIDE (62719-438)	Methoxyfenozide	All Other Uses	Aerial spray	Any form	1

Codes and Limitations Table	
Code	Limitation
1	Do not apply this product in the specified areas.





# 8. Understanding the components of the PDF Bulletin


If no PULAs occur within your intended pesticide application area:

The month for which the Bulletin is valid is located at the top of the page.

If there are no PULAs within the intended application area, no pink-shaded use limitation areas will appear on the map.


If this occurs, there are currently no pesticide use limitations in place to protect listed species at this location for the month indicated at the top of the Bulletin.

## Endangered Species Protection Bulletin



**Application Month:** February 2022  
**Product:** INTREPID 80WSP AGRICULTURAL INSECTICIDE (62719-438)

**1** Areas where pesticide use must be limited are identified on the map. A legend is located beside the map to help pinpoint these locations.



**Legend**  
Limitation Area

Currently, no pesticide use limitations exist within the printed map view for the month/year and product you selected, beyond the instructions specified on the pesticide label.  
Follow the use instructions on your label.

Ensure that your pesticide application area is within the printed map view. If it is not, follow the directions on the Instructions Tab to ensure that your pesticide application area is captured within the printed map view.

Please check back if you plan to apply your pesticide in an area outside the map view or in a month and year other than the one for which this Bulletin is valid.

# 9. Additional Information:

The geographic area where a pesticide use limitation is present to protect listed species and their designated critical habitat is referred to as a Pesticide Use Limitation Area (PULA).

Each PULA is relevant for the pesticide active ingredient(s) and product(s) specified for that area. The search tools in the BLT application can be used to view specific active ingredients and/or products associated with a given PULA for the intended application area specified in the user-defined search.

Limitation information can be found in the ***Limitations for Selected Area Table*** within the application, and in the PDF version of the Bulletin.

Frequently asked questions about bulletins can be found here: <https://www.epa.gov/endangered-species/bulletins-live-two-qa>